

JOB DESCRIPTION

BAND	GRADE	SUBGRADE	WORKING CONDITIONS
B	2	1	

JOB TITLE	CONTRACT REFERENCE
Water Safety Instructor	Community Education

TITLE OF IMMEDIATE SUPERVISOR	VERSION DATE
Aquatics Program Coordinator	April 2008

JOB SUMMARY Teach swimming lessons to youth and adults as directed by the Aquatics Coordinator, using techniques and procedures specified by the program.

TASK NO.	FREQUENCY	BAND/GRADE
----------	-----------	------------

The essential functions of this job include, but are not limited to, the following fundamental job duties:			
1.	<ul style="list-style-type: none"> Teach swimming lessons and/or other aquatics related learning or recreational activities as directed by the Aquatics Coordinator. Responsibilities include the safety of students, instruction following the techniques and methods of the program, and reporting student progress. 	90%	B2
2.	<ul style="list-style-type: none"> Maintain a safe, healthy environment for all participants that promotes positive values and respect. Provide discipline or other intervention as directed by the Aquatics Coordinator, including monitoring assigned children at all times, supervising student check-in and check-out so that students leave with authorized adults, reporting any suspected child endangerment or abuse to the Coordinator, and being aware of and reporting any other real or perceived hazards to the health and safety of any program participant. 	5%	A1
3.	<ul style="list-style-type: none"> Maintain positive and open communications with parents, the Coordinator, and other staff. 	3%	A1
4.	<ul style="list-style-type: none"> Participate in staff development activities provided by the program as directed. 	2%	N/B

JOB TITLE

Water Safety Instructor Instructor

CONTRACT REFERENCE

Community Education

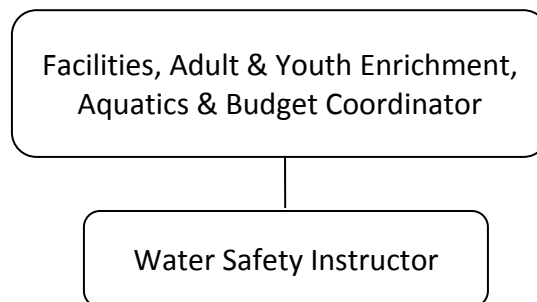
– Page 2

QUALIFICATIONS (Specific training or job experience required before appointment)

- Age 16 or older
- High School Diploma or equivalent, child care certificate preferred
- Experience working with children in groups

Clear criminal background check

- Water safety instructor certificate
 - Red Cross lifeguard certificate
 - Valid CPR certificate
-

ORGANIZATIONAL RELATIONSHIPS**SYMBOLS**

DIRECT SUPERVISION

INDIRECT SUPERVISION

.....

WORK DIRECTION

ADVISE/INFORM

-.-.-.-

PHYSICAL FACTORS

The physical demands described here are representative of those that must be met by an employee to successfully perform the essential functions of this job. Reasonable accommodations may be made to enable individuals with disabilities to perform the essential functions. While performing the duties of this job, the employed is regularly required to talk, hear, climb, balance, stoop, kneel, reach for objects, stand, walk, push, pull, lift, and use hands to grasp and feel. The employee must frequently lift and/or move 40 pounds or more. Specific vision abilities required include close vision, distance vision, and the ability to adjust focus.

NON EXEMPT

Not to exceed 40 hours per week.