



A World-Class Community of Learners

JOB DESCRIPTION

BAND GRADE SUBGRADE WORKING CONDITIONS

JOB TITLE

Elementary School STEM Club Advisor

CONTRACT REFERENCE

FEA Master Agreement

TITLE OF IMMEDIATE SUPERVISOR

Elementary Principal and Activities Administrator

VERSION DATE

February 2018

JOB SUMMARY

Oversee and manage all aspects of STEM club and related activities at your site.

TASK NO.

Frequency **Band/
Grade**

The essential functions of this job include, but are not limited to, the following fundamental job duties:			
1.	Organize and facilitate meetings.		
2.	Organize and supervise all activities related to every aspect of the club.		
3.	Oversee the club to ensure all activities are run independently from the school budget and fundraising is performed within district and school guidelines.		
4.	Create and maintain an atmosphere of inclusion, not only within the Club but between other similar FPS clubs and activities as well.		
5.	Work collaboratively with school administration to ensure a positive atmosphere within the Club and the school in general.		
6.	Seek improvement through local, state, national, and international workshops, initiatives, and contacts if appropriate.		
7.	Work in collaboration with local FPS STEM Club Advisors.		
8.	Be open to new ideas from students, staff, and administration and look for positive ways to respond to the ever changing climate of Fridley Middle School.		
9.	Follow school policies and guidelines related to fee collection, meeting times, transportation, and other related activities.		
10.	Other duties as assigned.		

QUALIFICATIONS (Specific training or job experience required before appointment)

- Minnesota teaching license required

JOB TITLE

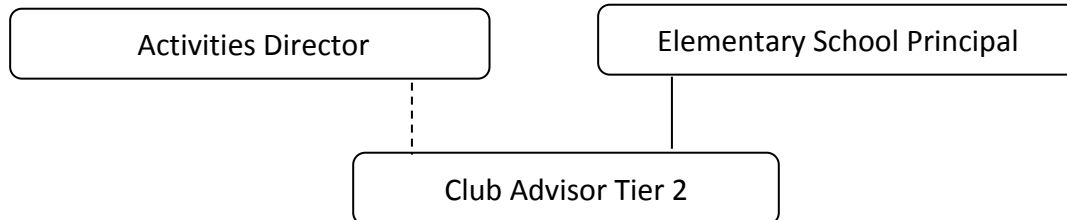
Elementary STEM Club Advisor

– Page 2

CONTRACT REFERENCE

FEA Master Agreement

- Experience in Middle School club management preferred
-

ORGANIZATIONAL RELATIONSHIPS**SYMBOLS**

DIRECT SUPERVISION

—————

INDIRECT SUPERVISION

.....

WORK DIRECTION

ADVISE/INFORM

-.-.-.-.-

PHYSICAL FACTORS

The physical demands described here are representative of those that must be met by an employee to successfully perform the essential functions of this job. Reasonable accommodations may be made to enable individuals with disabilities to perform the essential functions. While performing the duties of this job, the employed is regularly required to talk, hear, climb, balance, stoop, kneel, reach for objects, stand, walk, push, pull, lift, and use hands to grasp and feel. The employed must frequently lift and/or move up to 60 pounds, occasionally being required to lift and/or move up to 80 pounds or more. Specific vision abilities required include close vision, distance vision, and the ability to adjust focus.

NON EXEMPT

Not to exceed 40 hours per week.