



A World-Class Community of Learners

JOB DESCRIPTION

BAND GRADE SUBGRADE WORKING CONDITIONS

JOB TITLE

Lighting and Sound

CONTRACT REFERENCE

FEA Master Agreement

TITLE OF IMMEDIATE SUPERVISOR

Play Director – Technical Director

VERSION DATE

January 2016

JOB SUMMARY

To assist the technical director in lighting and sound

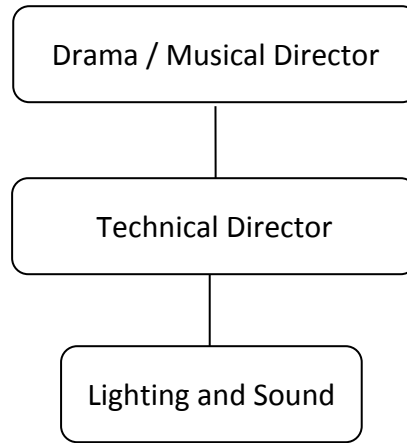
TASK NO.

The essential functions of this job include, but are not limited to, the following fundamental job duties:	
1.	In collaboration with the director, determine lighting and sound for the production.
2.	Design lighting and sound to comply with the overall vision of the director.
3.	Work in collaboration with all entities of the production.
4.	Stay within the allotted budget determined by the director.
5.	Maintain a clean and quality technical booth in collaboration with the district auditorium coordinator and auditorium staff.
6.	Maintain a system to ensure that sound and lighting equipment are orderly and well cared.
7.	Train students and volunteers to use quality and safe lighting and sound techniques which stay within the limitations of the district auditorium capabilities.
8.	Attend all meetings related to the production.
9.	Report any issues of concern regarding safety, conflict, staffing, students, and parents to the activities administrator.
10.	Other duties as assigned.

QUALIFICATIONS (Specific training or job experience required before appointment)

- Background in theater/drama preferred
- Lighting and Sound design experience required

ORGANIZATIONAL RELATIONSHIPS



SYMBOLS

DIRECT SUPERVISION	INDIRECT SUPERVISION	WORK DIRECTION	ADVISE/INFORM
_____	-----	- - - - -

PHYSICAL FACTORS

The physical demands described here are representative of those that must be met by an employee to successfully perform the essential functions of this job. Reasonable accommodations may be made to enable individuals with disabilities to perform the essential functions. While performing the duties of this job, the employed is regularly required to talk, hear, climb, balance, stoop, kneel, reach for objects, stand, walk, push, pull, lift, and use hands to grasp and feel. The employed must frequently lift and/or move up to 25 pounds, occasionally being required to lift and/or move up to 40 pounds or more. Specific vision abilities required include close vision, distance vision, and the ability to adjust focus.

NON EXEMPT

Not to exceed 40 hours per week.