

**JOB DESCRIPTION**

---

**BAND    GRADE    SUBGRADE    WORKING CONDITIONS**

---

<b>JOB TITLE</b>	<b>CONTRACT REFERENCE</b>
Musical Choreographer	FEA Master Agreement

---

<b>TITLE OF IMMEDIATE SUPERVISOR</b>	<b>VERSION DATE</b>
Play Director	January 2016

---

**JOB SUMMARY**  
To oversee all aspects of choreography for the production

---

**TASK NO.**

The essential functions of this job include, but are not limited to, the following fundamental job duties:	
1.	In collaboration with the director, choreography for the production.
2.	Select choreography which complies with the overall vision of the director.
3.	Assist the director in cast selections as assigned.
4.	Prepare students in their chorographical roles for a quality production.
5.	Collaborate with staff to ensure quality practices, run throughs, and rehearsals.
6.	Provide dance and other theatrical movement technique and assistance to ensure a quality production.
7.	Attend all meetings related to the production.
8.	Report any issues of concern regarding safety, conflict, staffing, students, and parents to the activities administrator.
9.	Other duties as assigned.

---

**QUALIFICATIONS** (Specific training or job experience required before appointment)

- Fine Arts Experience Preferred
-

---

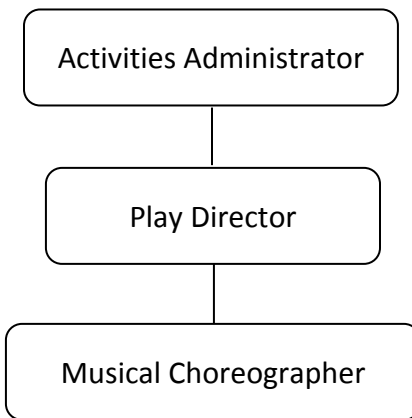
**JOB TITLE**

Musical Choreographer

– Page 2

**CONTRACT REFERENCE**FEA Master Agreement

---

**ORGANIZATIONAL RELATIONSHIPS**

---

**SYMBOLS**

DIRECT SUPERVISION

\_\_\_\_\_

INDIRECT SUPERVISION

.....

WORK DIRECTION

-----

ADVISE/INFORM

-.-.-.-

---

**PHYSICAL FACTORS**

The physical demands described here are representative of those that must be met by an employee to successfully perform the essential functions of this job. Reasonable accommodations may be made to enable individuals with disabilities to perform the essential functions. While performing the duties of this job, the employed is regularly required to talk, hear, climb, balance, stoop, kneel, reach for objects, stand, walk, push, pull, lift, and use hands to grasp and feel. The employed must frequently lift and/or move up to 10 pounds, occasionally being required to lift and/or move up to 25 pounds or more. Specific vision abilities required include close vision, distance vision, and the ability to adjust focus.

**NON EXEMPT**

Not to exceed 40 hours per week.