



JOB DESCRIPTION

BAND GRADE SUBGRADE WORKING CONDITIONS

JOB TITLE Positive Behavioral Interventions and Support (PBIS) Team Leader
CONTRACT REFERENCE FEA Master Agreement

TITLE OF IMMEDIATE SUPERVISOR Principal
VERSION DATE January 2016

JOB SUMMARY
 Lead building staff in PBIS initiatives.

TASK NO. FREQUENCY BAND/GRADE

The essential functions of this job may include, but are not limited to, the following fundamental job duties:	
1.	Attend all required meetings.
2.	Plan, coordinate and facilitate PBIS staff development sessions.
3.	Interpret, and analyze school data for decision making.
4.	Attend mandatory trainings at MDE.
5.	Ensure implementation evaluations are completed.
6.	Manage PBIS action plan for the school wide system.
7.	Serve as a resource for staff regarding PBIS.
8.	Other duties as assigned.

QUALIFICATIONS (Specific training or job experience required before appointment)

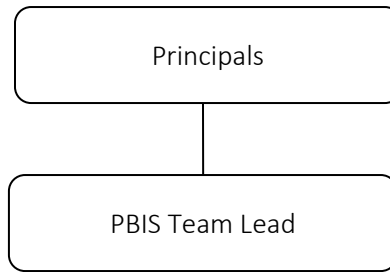
- Teaching license
- Building Staff

JOB TITLE

PBIS Team Lead

– Page 2

CONTRACT REFERENCEFEA Master Agreement

ORGANIZATIONAL RELATIONSHIPS

SYMBOLS

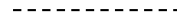
DIRECT SUPERVISION



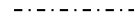
INDIRECT SUPERVISION



WORK DIRECTION



ADVISE/INFORM

**PHYSICAL FACTORS**

The physical demands described here are representative of those that must be met by an employee to successfully perform the essential functions of this job. Reasonable accommodations may be made to enable individuals with disabilities to perform the essential functions. While performing the duties of this job, the employed is regularly required to talk, hear, climb, balance, stoop, kneel, reach for objects, stand, walk, push, pull, lift, and use hands to grasp and feel. The employed must frequently lift and/or move up to 25 pounds, occasionally being required to lift and/or move up to 40 pounds or more. Specific vision abilities required include close vision, distance vision, and the ability to adjust focus.

NON EXEMPT

Not to exceed 40 hours per week.