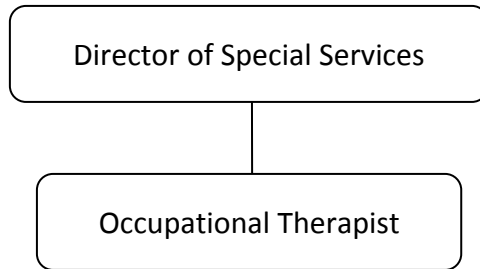

JOB TITLE

Occupational Therapist
– Page 2

CONTRACT REFERENCE

Fridley Education Association Master Agreement

ORGANIZATIONAL RELATIONSHIPS

SYMBOLS

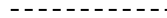
DIRECT SUPERVISION



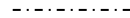
INDIRECT SUPERVISION



WORK DIRECTION



ADVISE/INFORM



PHYSICAL FACTORS

The physical demands described here are representative of those that must be met by an employee to successfully perform the essential functions of this job. Reasonable accommodations may be made to enable individuals with disabilities to perform the essential functions. While performing the duties of this job, the employed is regularly required to talk, hear, climb, balance, stoop, kneel, reach for objects, stand, walk, push, pull, lift, and use hands to grasp and feel. The employee must frequently lift and/or move 40 pounds or more. Specific vision abilities required include close vision, distance vision, and the ability to adjust focus.