



A World-Class Community of Learners

JOB DESCRIPTION

BAND	GRADE	SUBGRADE	WORKING CONDITIONS
C	5	1	

JOB TITLE	CONTRACT REFERENCE
School Nurse	Fridley Education Association Master Agreement

TITLE OF IMMEDIATE SUPERVISOR	VERSION DATE
Director of Special Services	November 2012

JOB SUMMARY Provides leadership in planning school health services. Supports and motivates the learning process in the school through health and educational services.

TASK NO.	FREQUENCY	BAND/GRADE
----------	-----------	------------

The essential functions of this job include, but are not limited to, the following fundamental job duties:		
1.	Plans and manages the school health program by implementing state and federal laws, regulations and rules	
2.	Assists in developing and revising goals as they relate to emergency care of ill and injured, absenteeism and community health	
3.	Assists in planning school programs	
4.	Provides health services through assessments and screenings	
5.	Implements plans for treatment when appropriate	
6.	Encourages wellness in students, families and staff	
7.	Assists in appropriate intervention strategy for children through school observations, home visits and conferences	
8.	Assists students, families and staff in identification and management of chronic health problems in students	
9.	Serves as a consultant to the administration in health matters as appropriate	
10.	Serves as a health counselor to students and assists parents with appropriate health resources for care and remediation	
11.	Plans and manages <i>Child Find</i> activities for handicapped children from birth through age 5	

JOB TITLE

School Nurse

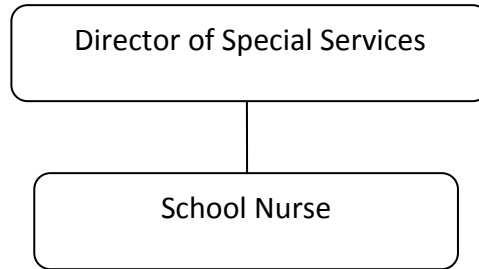
CONTRACT REFERENCE

Fridley Education Association Master Agreement

– Page 2

QUALIFICATIONS (Specific training or job experience required before appointment)

- Hold a baccalaureate degree from a college or university that is accredited
 - Minnesota Department of Education School Nurse Licensure
-

ORGANIZATIONAL RELATIONSHIPS

SYMBOLS

DIRECT SUPERVISION

INDIRECT SUPERVISION

.....

WORK DIRECTION

ADVISE/INFORM

- - - - -

PHYSICAL FACTORS

The physical demands described here are representative of those that must be met by an employee to successfully perform the essential functions of this job. Reasonable accommodations may be made to enable individuals with disabilities to perform the essential functions. While performing the duties of this job, the employed is regularly required to talk, hear, climb, balance, stoop, kneel, reach for objects, stand, walk, push, pull, lift, and use hands to grasp and feel. The employed must frequently lift and/or move up to 25 pounds, occasionally being required to lift and/or move up to 50 pounds or more. Specific vision abilities required include close vision, distance vision, and the ability to adjust focus.